



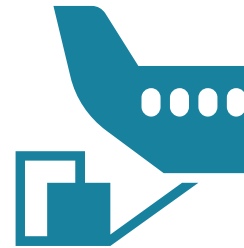
Cargo

Highlights



1.49
million tonnes of cargo

Change: + 8.2%



15,661
full freighter movements

Change: - 1.9%

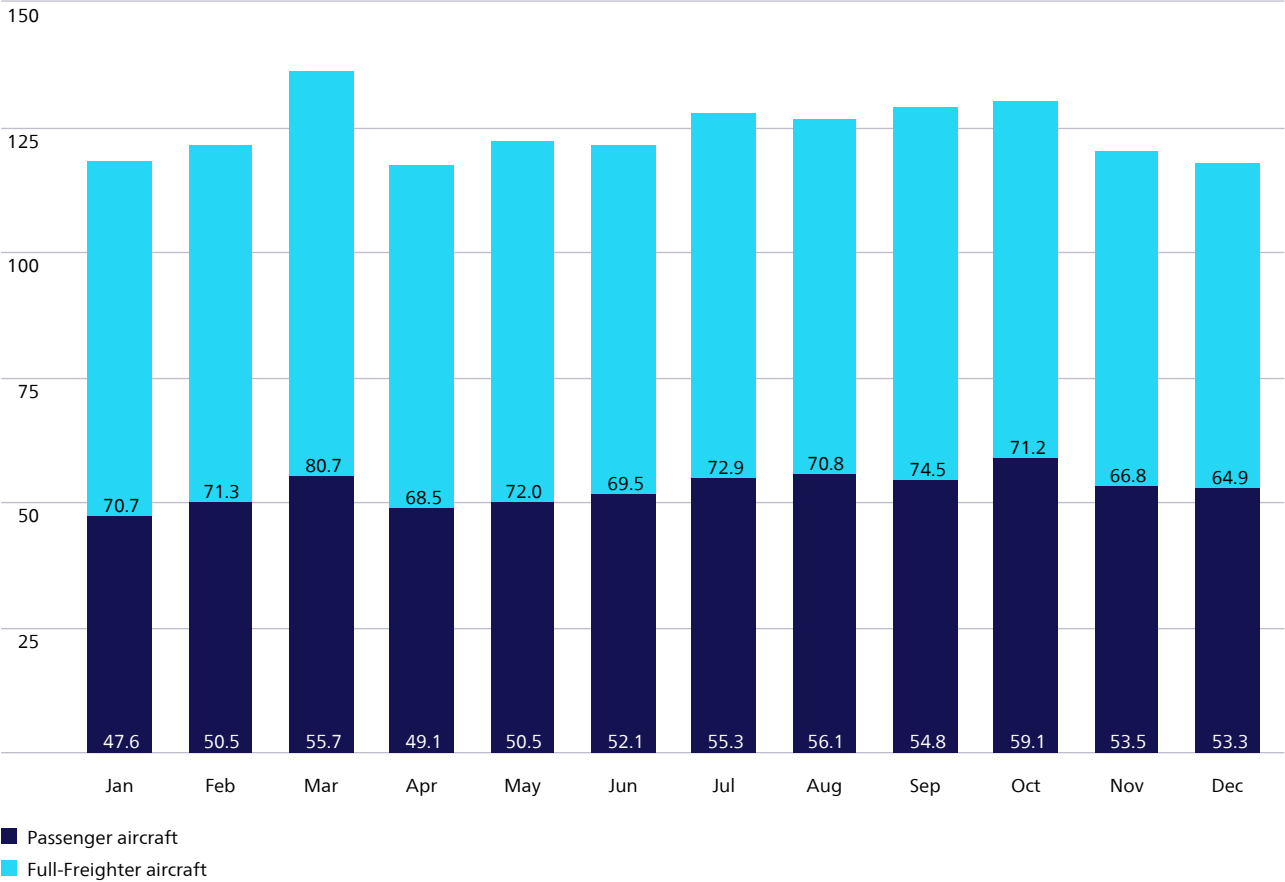


637,712
belly tonnage

Change: + 19.8%

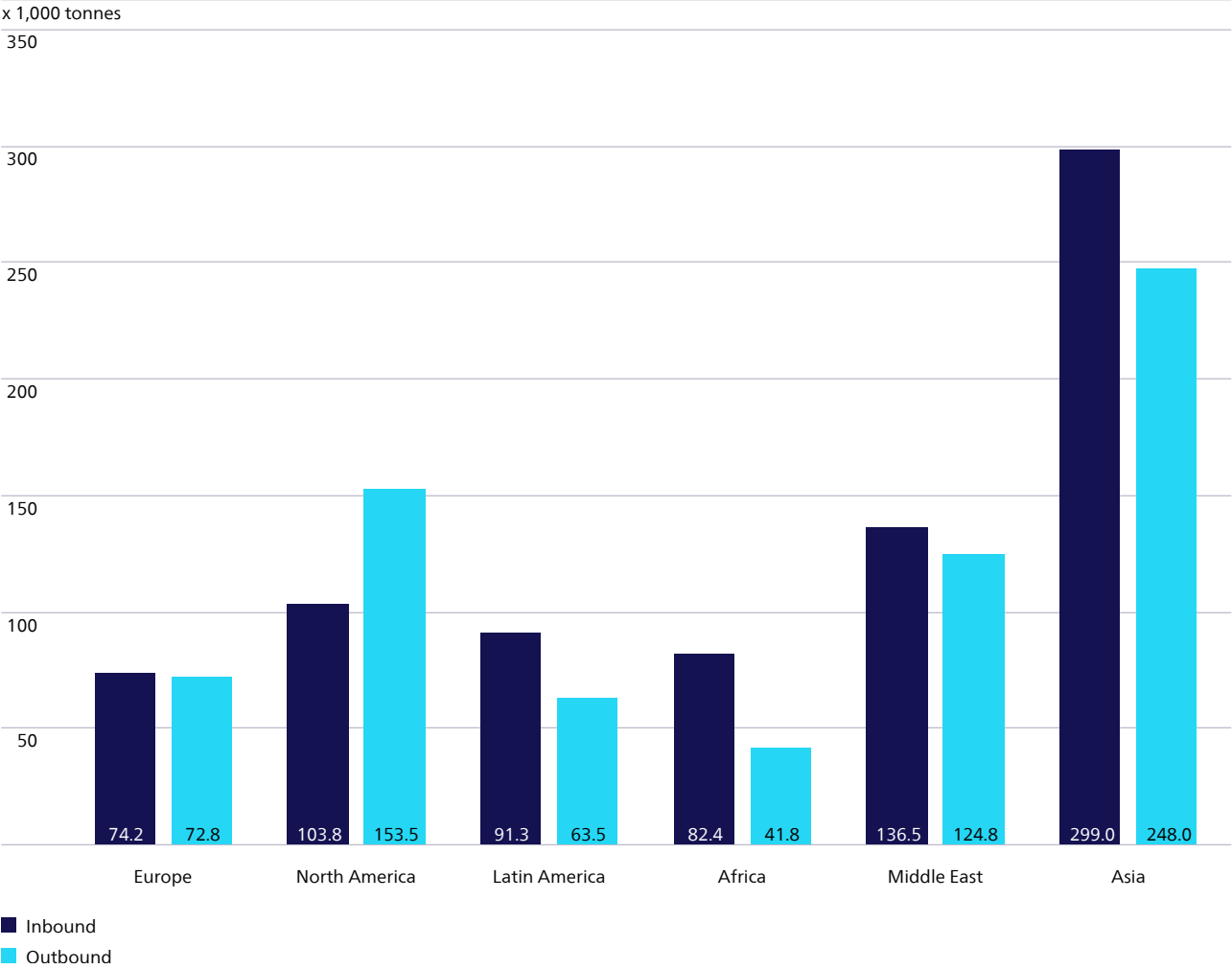
Figures by month

Monthly cargo totals (x1,000 tonnes)



Figures by region

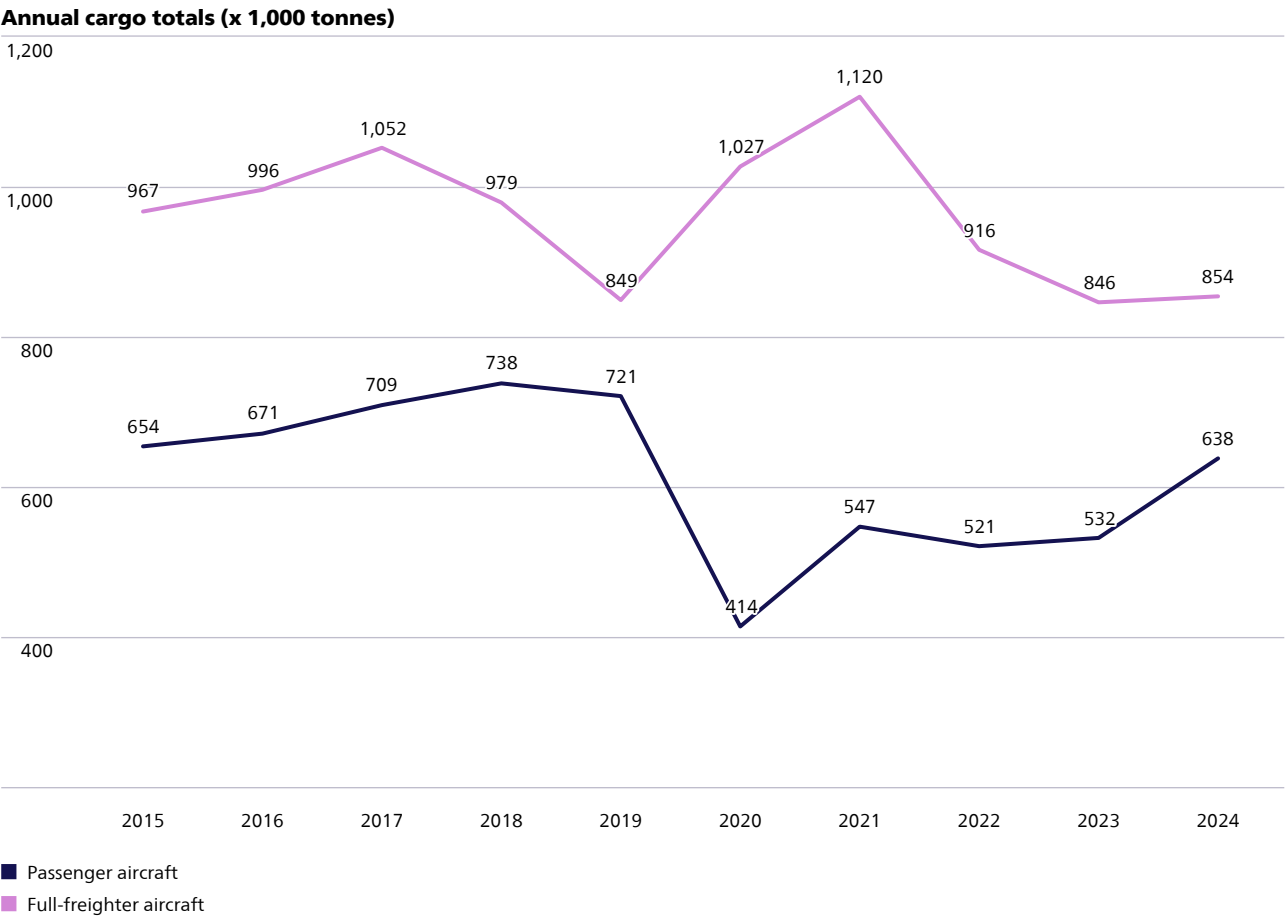
Annual cargo totals (x 1,000 tonnes)



Annual cargo totals (x 1,000 tonnes)

	2024	Compared to 2023 in %
Total	1,492	8.2%
Passenger services	638	19.8%
Full-freighter services	854	0.9%
Inbound	787	7.8%
Outbound	704	8.8%

Figures by year



Figures by airport

Main cargo destinations (tonnes)

Ranking	(2023 Ranking)	Airport	IATA code	2024 in tonnes	Compared to 2023 in %
1	(1)	Shanghai	PVG	195,353	-2.9%
2	(2)	Doha	DOH	91,508	26.0%
3	(3)	Nairobi	NBO	59,601	12.4%
4	(8)	Abu Dhabi	AUH	53,442	31.8%
5	(5)	Quito	UIO	48,887	7.2%
6	(4)	Guangzhou	CAN	46,402	0.1%
7	(7)	Seoul Incheon	ICN	45,545	10.5%
8	(10)	Istanbul Airport	IST	43,396	16.3%
9	(11)	Dubai International	DXB	41,617	11.6%
10	(12)	Singapore	SIN	39,184	12.3%
11	(6)	Chicago	ORD	36,108	-18.5%
12	(9)	Baku	GYD	34,909	-11.3%
13	(13)	Tokyo	NRT	33,752	3.4%
14	(14)	Miami	MIA	31,855	1.5%
15	(22)	New York JFK	JFK	29,555	48.2%
16	(16)	Jeddah	JED	29,055	18.5%
17	(19)	Taipei	TPE	28,205	18.2%
18	(17)	Dubai Al Maktoum Int.	DWC	27,555	13.0%
19	(24)	Hong Kong	HKG	25,910	47.3%
20	(15)	Leipzig	LEJ	25,297	2.5%



Other airports